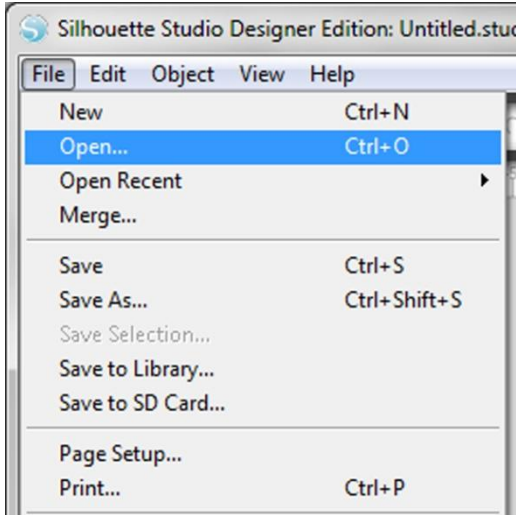


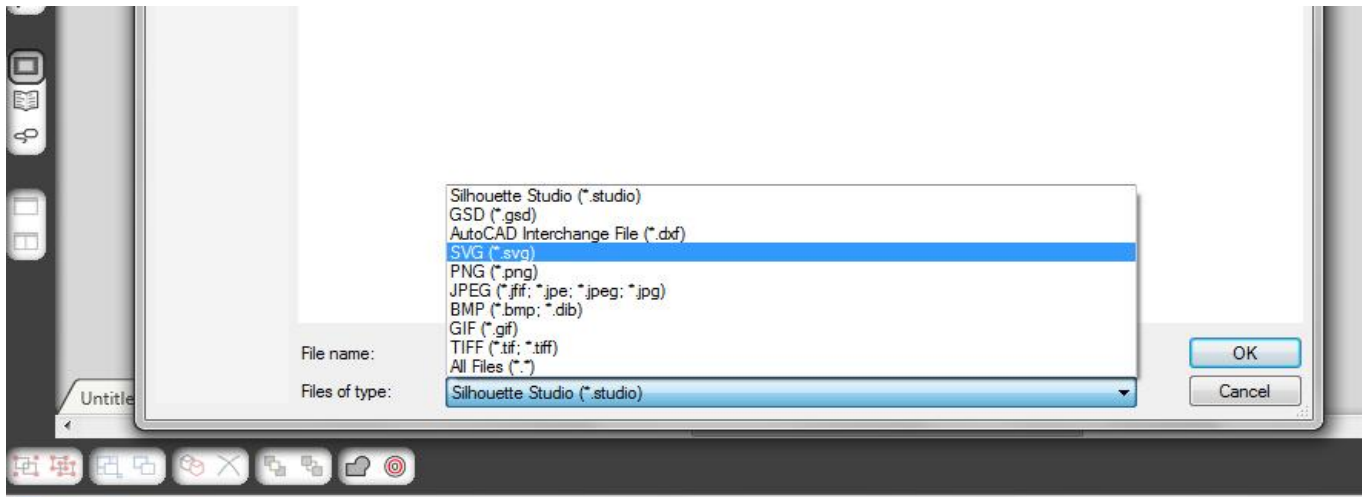
How to cut SVG/ DXF files with Silhouette Studio Designer Edition software.

- How to open/ import SVG, DXF files to cut with Silhouette Studio Designer Edition software.

Select **File** from the main toolbar then click **Open**

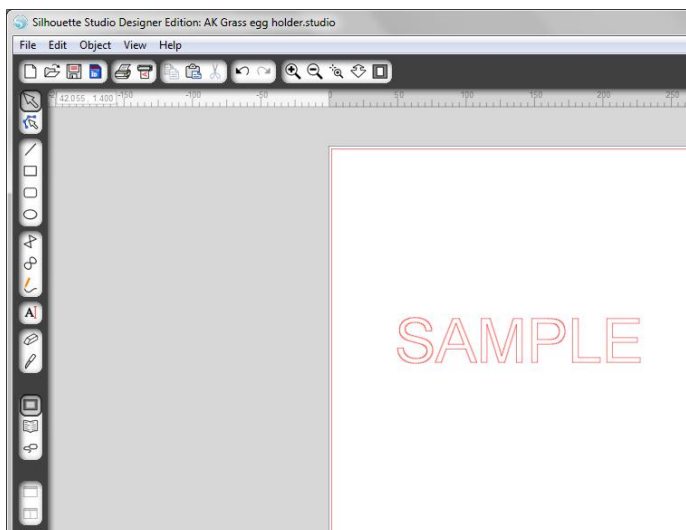


Click on **File of type** to select the file type **SVG (*.svg)** or **DXF** (for example) then click **OK**.



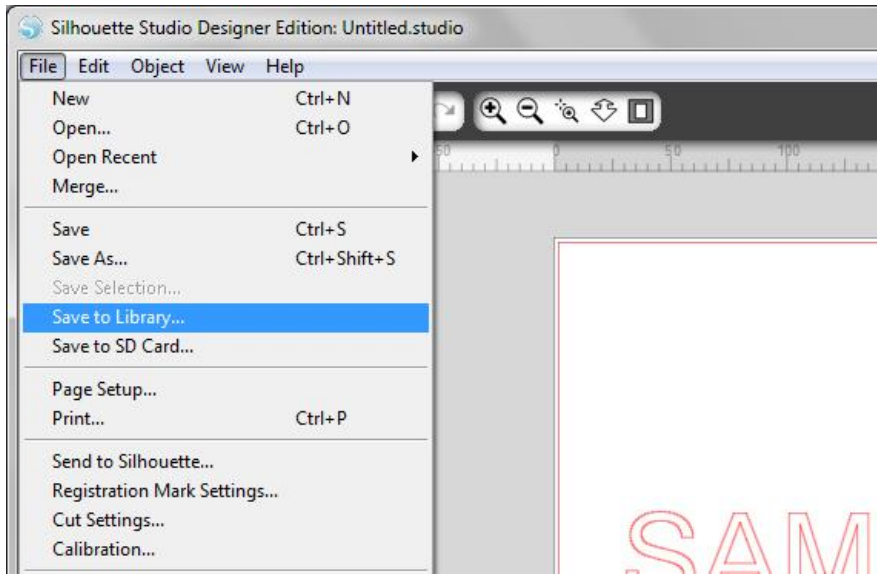
Browse the folder that contains the file you want to cut. Select the file then click **OK**.

Then the file will be opened /imported to the mat as shown below. Proceed to edit and cut the file as usual.

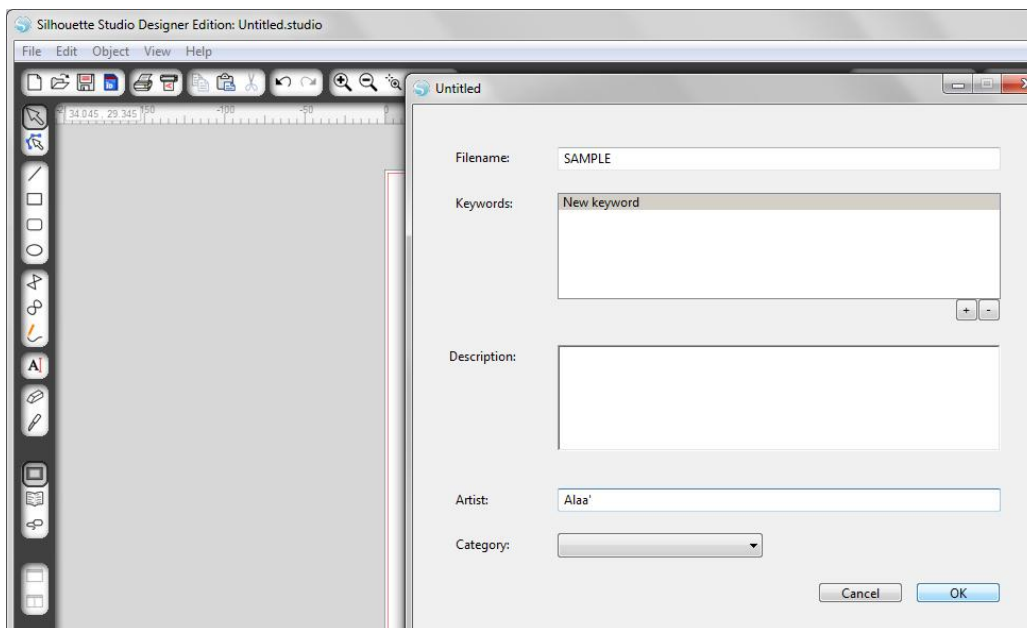


- How to save SVG, DXF files inside silhouette Studio Designer Edition software.

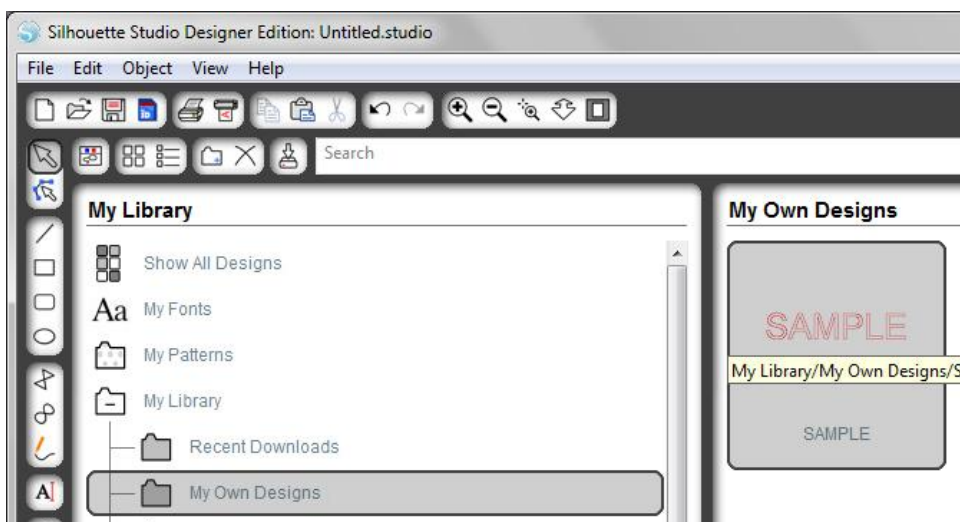
After you open/import the (SVG, DXF) cutting file following the steps above, select **File** from the tool bar then click **Save to Library**.



A new window will appear, fill in the info, **name the file**, the other info are optional, then click **OK**.



Now the file is saved in your library.

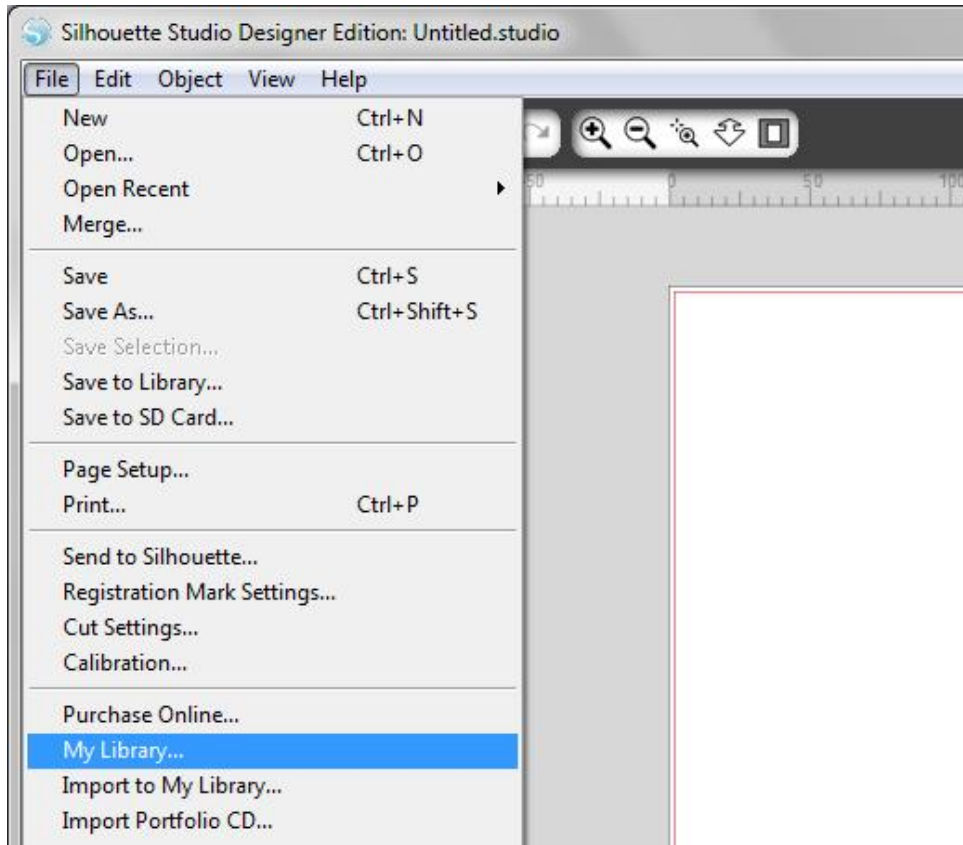


To **open** the saved file again go to **My Library**, select the your folder then double click on your file to open.

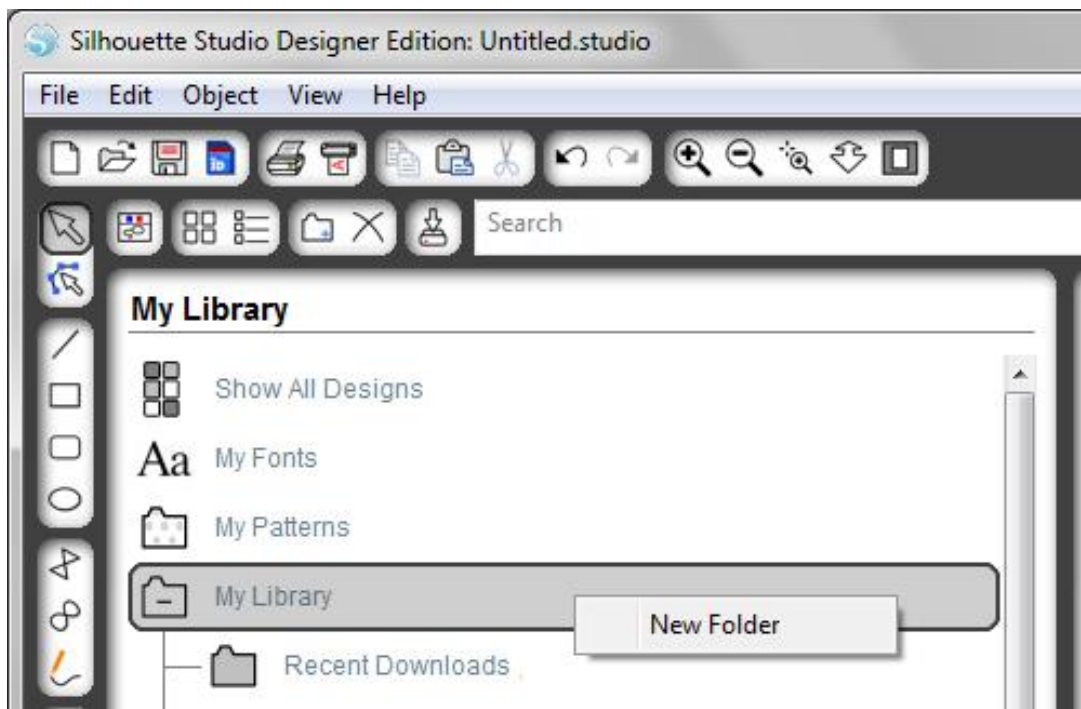
The cutting file will show on the mat, edit and cut as usual.

- How to create your own folders inside Silhouette studio library

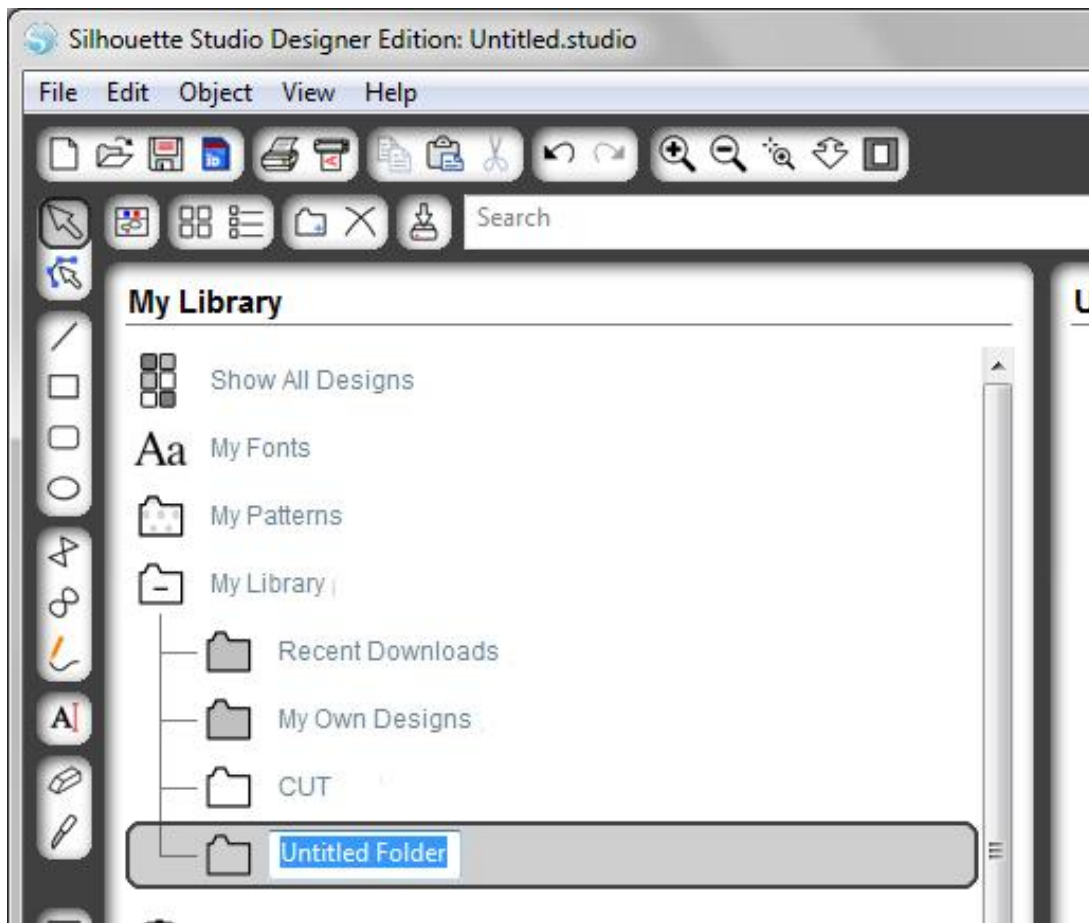
Select **File** from the tool bar then click **My Library**.



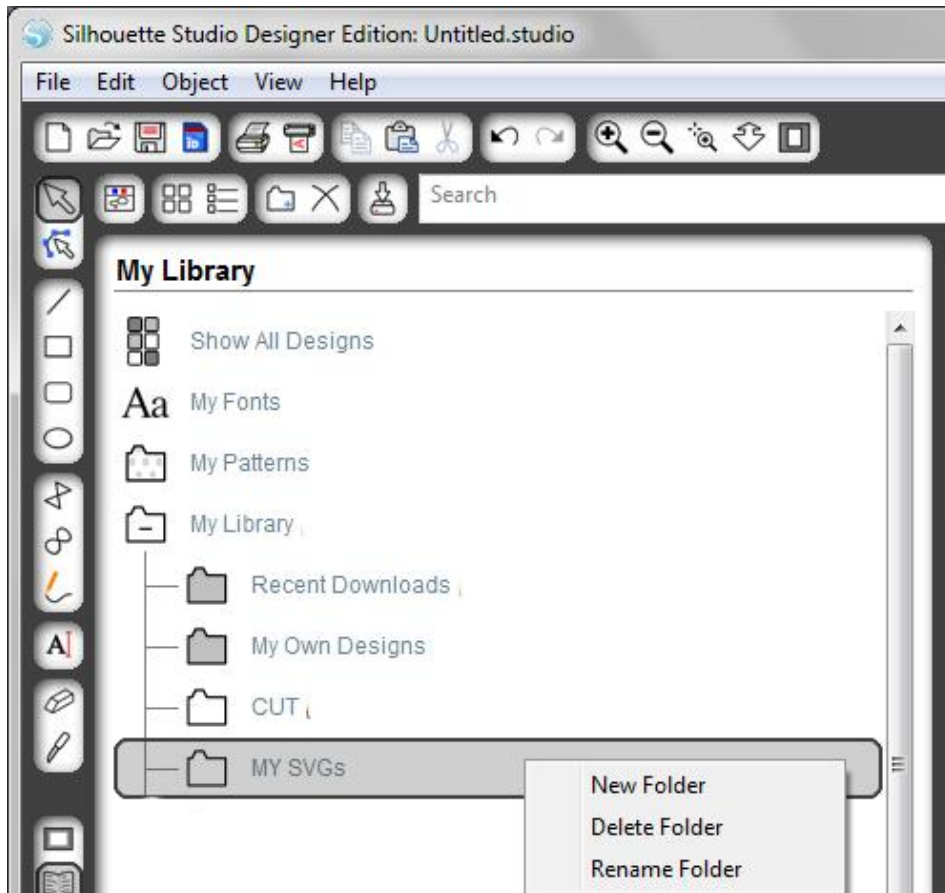
Right click on **My Library** then **New Folder** option will appear.



Click on **New Folder** and rename the **untitled folder** with a name of your choice.



You can also create new subfolder inside your main folder, rename, or delete.



Now you can just **drag and drop** your cutting files to arrange and save them inside different folders.